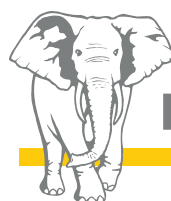


# Truck-mounted concrete pump 20-4

Less support surface, more utilisation



**Putzmeister**

# True greatness demonstrated in the smallest class

## Unimpeded deployment on the smallest possible space

Wherever confined space conditions prevail, this small pump comes through with flying colors.

Whether in halls, under bridges, underpasses or when building multi-storey buildings – the 20-4 is at home on small and medium-sized job sites. The remarkably low unfolding height of 3.9 m plays a major role in this!



## Lavish dimensions are at the wrong place here

Only the 20-4 can offer such a support area: 3.40 m at the front and just 2.60 m at the rear – and it stands firmly on an area that is only as wide as the vehicle when the driver's door is open. The compact TR support from Putzmeister allows unimpeded flow of traffic in almost any job site situation.

## Full deployment on 2 axles

Thanks to the 2-axle chassis with small wheelbase (min. 4200 mm with MB Axor 1828) the 20-4 moves nimbly through the dense traffic. The low vehicle height of 3.40 m is also ideal for passing through most bridges and underpasses. And thanks to its low total weight, it has reserves for more than enough operating materials and accessories. For this reason, it is ideal for hose delivery.

## Chassis and substructure at a glance

- **Low total weight** offers high weight reserves for loading accessories e.g. for hose delivery
- **Fewer obstructions of the surrounding area**, such as traffic, thanks to narrower support widths
- **Compact and manoeuvrable** thanks to its 2-axle chassis with small wheelbase



# The placing boom – lightweight indoor champion

## This is outstanding: Folded out at just 3.9 m

20-4, this is about a 20 m vertical reach distributed over 4 arms and compactly located in roll Z-folding. With excellent slip into building properties thanks to low unfolding height this boom opens up a wide range of applications such as the concreting of halls or bridges. The 4-arm boom can be folded out quickly and thus saves valuable working time.

Another benefit is the fact that the boom is relatively very light. The weight saving can be used for a higher payload if necessary. And in situations requiring very precise movements of the boom due to cramped conditions, the low weight ensures very direct response and thus user-friendly handling.

## Work more accurately – even blindfolded

The fully electronic placing boom control EBC (Ergonic® Boom Control) available as an option ensures noticeable relief of the operator. The convenient joystick allows extremely smooth handling of the boom in one-handed operation. This is because EBC dampens the boom vibrations and ensures that the end hose remains at a constant height during a horizontal movement.

Thanks to a wide range of additional settings of EBC the operator can limit the working area or block certain arm positions. This makes work easier and increases operating safety.



## The new boom at a glance

- **Around 20 m vertical reach with 4 arms in roll Z-folding**
- **Direct response characteristics** of the boom control
- **Standard pump line DN 125/5.5"**
- **EBC (optional)** for vibration damping, one-handed control and restriction of workspace
- **Low unfolding height of 3.9 m**



# The concrete pump – Efficiency in an instant

## It is in your hands

Everything under control and the best overview. This is always extremely simple and comfortable with an EPS-controlled pump, because the graphical display and remote control make operation easier and ensure transparency. On the EGD (Ergonic® Graphic Display) the driver is able to see all relevant machine data and set individual parameters. A reliable failure management system ensures that the machine is fully operational during malfunctions and even in emergency operation.



## The output can be controlled

Here, nothing is left to chance, because success can be controlled. Thanks to the computer-aided control via EPS (Ergonic® Pump System), which is integrated into all models, the outstanding performance and comfortable handling of the concrete pump is guaranteed. EPS regulates the pumping process computer-controlled so that it is quieter and the boom vibrations are reduced. The pump data is optimally coordinated with EPS and adapted to the relevant application.

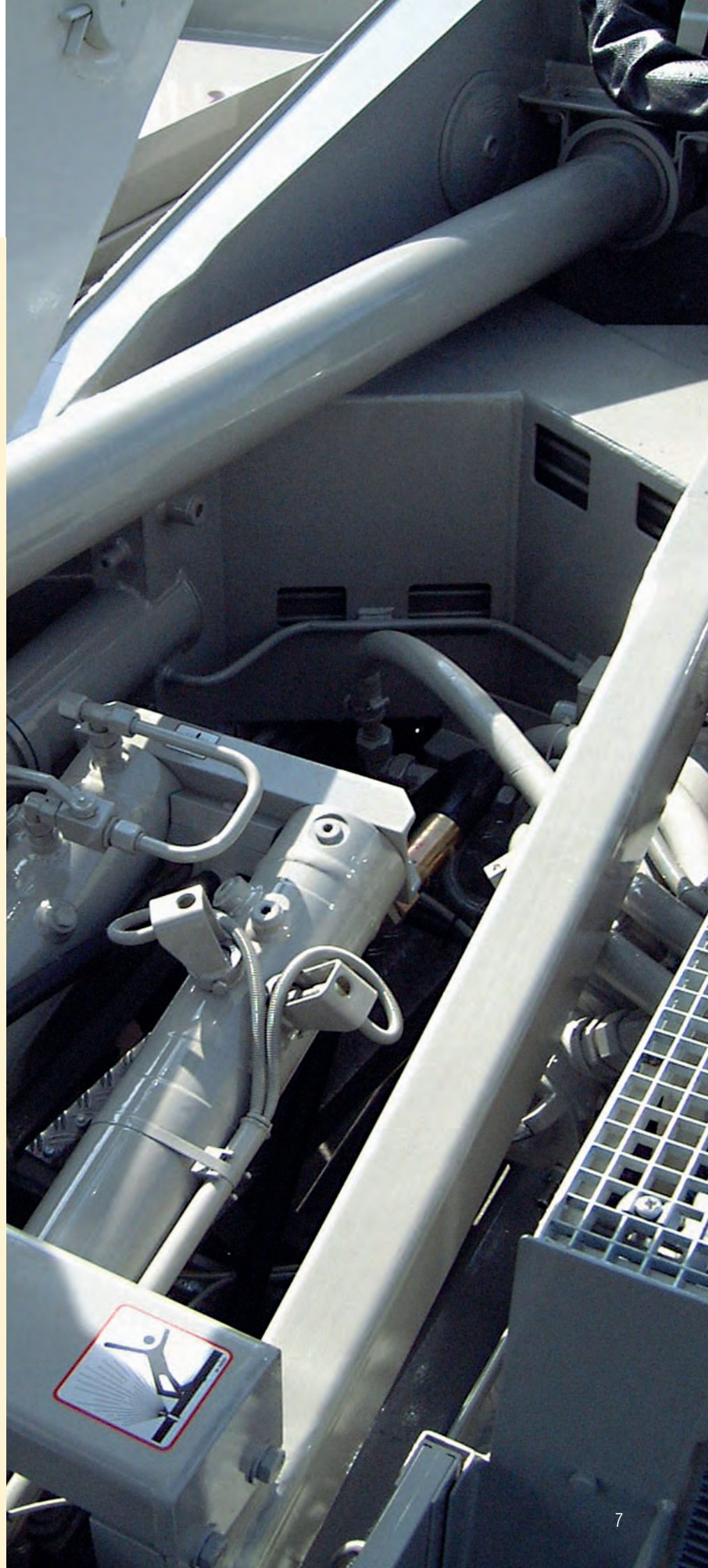
Apart from EPS, there is EOC (Ergonic® Output Control), an effective module for working efficiently while saving at the same time. This is because EOC controls the motor speed when fuel consumption, wear and noise are low. Unfavourable areas are avoided automatically. EOC is included in EPS and is therefore integrated in all pumps as standard.

The same applies to the so-called SN (Surge Neutralizer) control and Push Over. They ensure that switching procedures are optimised and wear-intensive pressure peaks are avoided. Apart from reducing boom vibrations, this prolongs the service life of the drive, pump line and mounting.

**ergonic®**  
*inside*

## The pump at a glance

- **Pump geometry optimally** adapted to all common types of concrete
- **Service-friendly control system** with free flow hydraulics and thus consistently high oil quality
- **Particularly wear-resistant** design of S-tube switch, which guarantees long service life
- **Hopper easily accessible**, thereby allowing easy cleaning, with hinged and pivotable 90° delivery line bend and convenient connection for pipelines on both the right and the left
- **Smooth, optimized pumping** with EPS and EOC, protects the pump and vehicle
- **Optimised smooth switchover with SN control and Push Over** avoids wear-intensive pressure peaks
- **Convenient operation** with display and remote control
- **Lower operating costs** thanks to low-maintenance components



# 20-4

With the Putzmeister 20-4 you get a machine with comprehensive and practice-oriented features already as standard. With the diverse optional equipment, you can also adapt your range of services to the needs and requirements of your customers.

## Supplied as standard

Ergonic® (EPS, EOC and EGD with fault management)

Hopper grease lubrication system

Remote control with display

Flushing water pump 160 l/min 25 bar

Anti-slip platform

Water tank with 610 l

Connections for emergency supply

Chromium-plated delivery cylinder

24 Volt rear boom light

## Optional

Larger RS 900 hopper with hinged 90° delivery line elbow

Hose magazine on the left side for 21 DN 65 – 4.5 m hoses  
Storage tray on the left side, 5 m long

Stainless steel mesh pallets on the left and right for couplings

Brackets for reduction from DN 125 to DN 65

EBC (Ergonic® Boom Control)

Pipe carrier on the right side for 8 or 12 DN 125 or DN 100 pipes with aluminium tray

Upgradeable with the "Sanima-Kit" I (for more information, see brochure BP 3885)

And much more ...

The end hose squeeze valve (EQV) closes securely and stops the flow of concrete



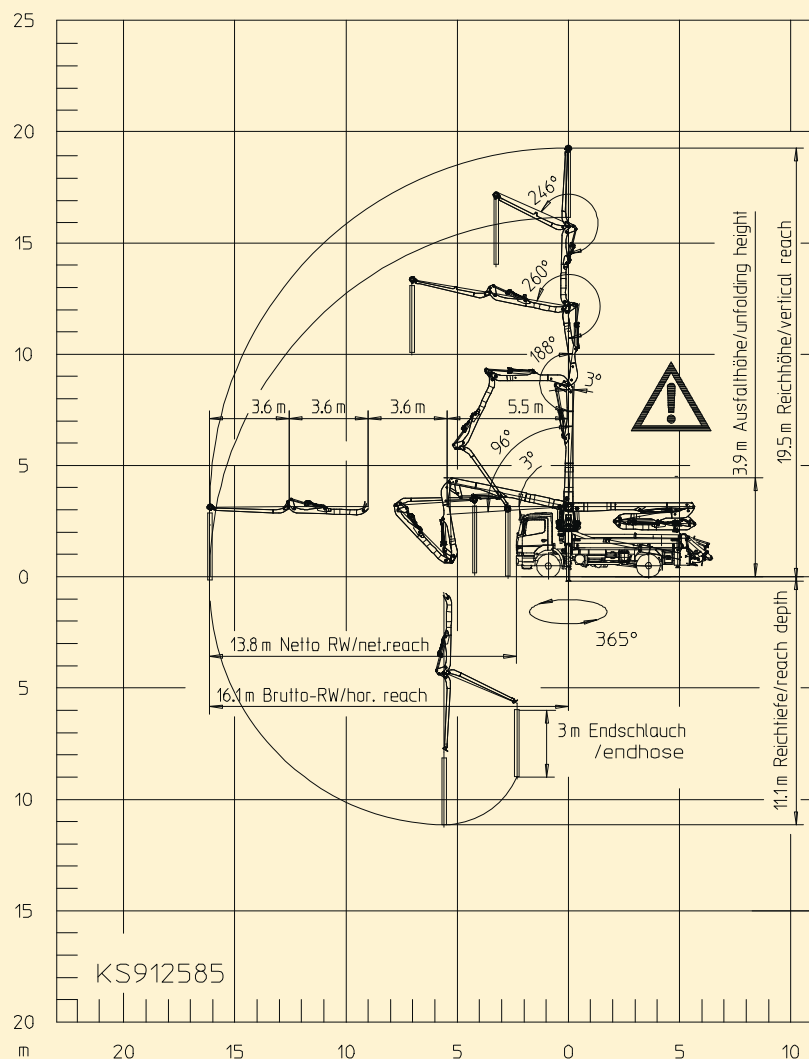
The compressor provides compressed air for various applications, e.g. cleaning



Spray tank with compressed air connection for easy cleaning of the hopper by moistening with release agent beforehand

The central grease lubrication system on the boom reduces the time for daily maintenance



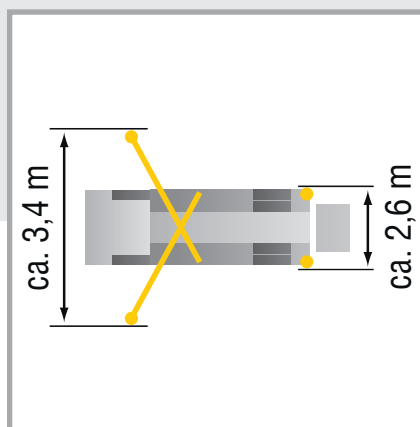


## Technical data – Placing boom

<b>Folding method</b>	4-arm roll Z-folding (ZR)
<b>Vertical reach</b>	19.5 m
<b>Range</b>	16.1 m gross
<b>Depth of reach</b>	11.1 m
<b>Unfolding height</b>	3.9 m
<b>End hose length</b>	3 m (optional 4 m)
<b>Delivery lines</b>	DN 125, max. 85 bar
<b>Slewing circle</b>	365°

## Technical data – General

<b>Support width</b>	<b>front / rear</b>
	3.4 m / 2.6 m
<b>Overall length</b>	8.8 m
<b>Height</b>	3.4 m



Dimensions may vary depending  
on model. Total weight dependent on  
equipment and chassis ≤ 16 t

## Technical data – Pump

Type	Output m³/h	Pressure bar	Stroke mm	Cylinder Ø mm	Strokes/ min
<b>09 H</b>	90	78	1400	230	26

# Build on Putzmeister – in service, parts, training

## Everything that sets service apart

Swift assistance, meaningful advice and a reliable supply of genuine Putzmeister accessories and parts – in over 120 countries worldwide. This is what we at Putzmeister understand as first-class service.

### Ideally placed to support you

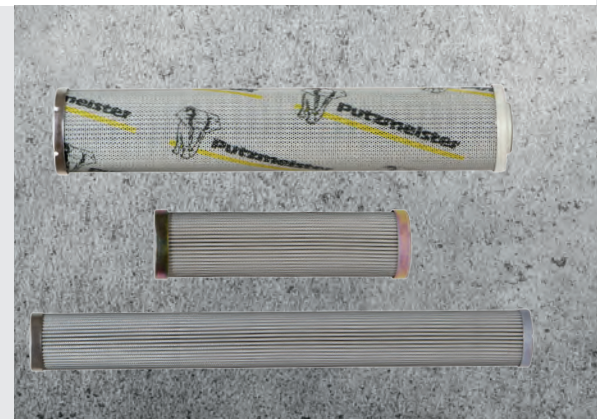
We train our service technicians continuously, provide a close-knit information network and the latest equipment and consistently strive to meet our customers' needs.

Thanks to state-of-the-art technology, our employees have all the relevant technical information about your machine at their fingertips, should the need arise. Allowing us to provide you with the best possible support for emergencies, repairs or preventive maintenance.



## Genuine parts for maximum availability

It goes without saying that we use only genuine Putzmeister parts in our workshops. This is the only way to guarantee consistent quality, checked for interoperability. And you can be absolutely sure that your machine meets the tough requirements with maximum performance and availability.



## Excellent in quality and customer proximity

In case of need, you have two options: Either the service team visits you or you take your machine to one of our service workshops. The latest tools, software analysis solutions and genuine parts ensure that your machine is operable again immediately.

All Putzmeister workshops and the workshops of our international Putzmeister partners meet our high-quality standard. Especially when it comes to manufacturer's inspections and acceptance procedures in accordance with specifications.

**Induction at handover –  
everything correct from the outset**

So you and your machinist can  
adapt perfectly to all special features  
and innovations

**Customer training –  
benefit from expert knowledge**

Practice-oriented learning offers many  
benefits: Your staff master the machine  
with all its special features, use the  
machine to optimum effect, reduce  
operating costs and avoid operating errors.

**100 hours of customer service –  
avoid potential sources of error**

With this customer service you receive  
a status report on your concrete pump  
as per the Putzmeister service plan.

**Our services for  
cost-effective work**

The Putzmeister service support points  
offer you these services – all provided by  
our experienced service staff:

**Mandatory machine inspection –  
calculable costs instead of  
incalculable failures**

Visual inspection and functional check of  
components for 100 % safety.  
The hydraulic system with cylinders, electrical  
system and core pump are also inspected.

**500 hours of customer service –  
protect your investment,  
retain your value**

Our technical customer service team is  
the number one choice for checking  
the safety and wear of your machine.  
You receive a status report for this, too.

**Our range of training courses and seminars:**

**For concrete pump operators**

- Training and development seminars on concrete pumps
- Training and development seminars on PUMI with piston and rotor pumps
- Regional / company seminars (in your region or on your premises)

**For concrete pump mechanics**

- Training and development seminars on concrete pump

**For concrete pump machinists and mechanics**

- Practical days in Aichtal
- Training: Handover and induction, on-the-job training

**For workshop managers and foremen**

- Overview of current developments in Putzmeister concrete pumps
- Qualification at the customer workshops for requisite maintenance work

Further information can be found at: [www.pm-akademie.de](http://www.pm-akademie.de)



# The 20-4 at a glance

- **Around 20 m vertical reach with 4 arms in roll Z-folding**
- **Minimum unfolding height of 3.9 m**
- **Extensive radius** for tasks in halls, under bridges, underpasses or when building multi-storey buildings
- **Small support area: 3.40 m at the front, 2.60 m at the rear**
- **Pump geometry adapted optimally to all common types of concrete**
- **Service-friendly control system** and consistently high oil quality thanks to **free flow hydraulics**
- **Particularly wear-resistant** design of S-tube switch, which guarantees long service life
- **User-friendly hopper**
- **Smooth, optimized pumping** with EPS and EOC, protects the pump and vehicle



Please note: The figures in the brochure may differ from the series scope of the machines.  
Further brochures: Ergonic® BP 4690

## Putzmeister Concrete Pumps GmbH

Max-Eyth-Straße 10 · 72631 Aichtal

Postfach 2152 · 72629 Aichtal

Tel. +49 (7127) 599-0 · Fax +49 (7127) 599-520

pmw@pmw.de · [www.putzmeister.com](http://www.putzmeister.com)



# Putzmeister

